



SHARP SEMI-AUTOMATIC ROTARY BOTTLE WASHING MACHINE

Key Features

- Geneva Mechanism.
- Four inner (Included one air wash) & one outer.
- Sequence of washes to customer's choice.
- Easy operation.
- Stationary nozzles eliminate contamination of water cycles.
- Easy loading and unloading.
- Individual solenoid valve for each washing sequence that eliminates carbon plate and other accessories reduces leakage and maintenance to minimum.
- Higher capacity centrifugal pumps to wash bigger bottles (500 & 1000 ml.).
- The stationary nozzles avoid chipping of bottle necks.
- Pumps and tanks are mounted on portable stand for easy maintenance.
- Bottle guide system especially for lightweight bottle.
- Pumps and Tanks are mounted on portable stand for easy maintenance.
- Separate panel control to avoid any short circuit due to spraying of water.
- S.S. glycerin fill pressure meter.



SRWM-64/96

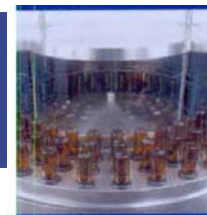


SHARP SEMI-AUTOMATIC ROTARY BOTTLE WASHING MACHINE

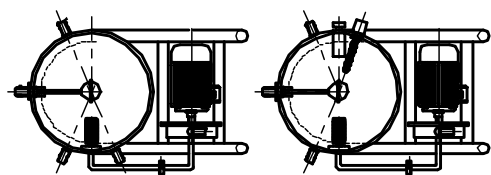
TECHNICAL SPECIFICATION :

Model		SRWM - 64	SRWM - 96
Output / Hour		2600 to 6000 Nos.	4300 to 9000 Nos.
No. of Container Holder		64	94
Direction of Movement		Clock wise	
Electrical Specification	Main Motor	0.5 HP / 415 Volts / 50 Hz.	
	Pump Two Nos.	1HP X 2 = 2 HP / 415 Volts / 50 HZ	
	Electric Heater	3 Kw.	
Tank Capacity		75 Ltrs. S.S. 304 (2 Nos.)	
Wash Cycle		4 inner + 1 Outer	
Working heights		860 to 910 mm	
Machine Dimensions (In mm)		1500 (L) x 1750 (W) x 1300 (H)	1500 (L) X 1750 (W) x 1300 (H)
Case Dimensions (In mm) Two Cases	Machine	1600 (L) x 1600 (W) x 1550 (H)	1600 (L) x 1600 (W) x 1550 (H)
	Tanks	1550 (L) x 1000 (W) x 1550 (H)	1550 (L) x 1000 (W) x 1550 (H)
Net Weight		450 Kgs.	550 Kgs.
Gross Weight		750 Kgs.	900 Kgs.
Change parts required		(A) Neck Dia: Bottle holding pocket. (B) Flat Container: Special type of cup.	

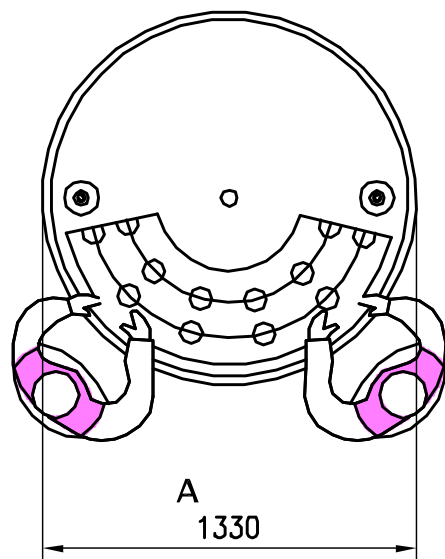
SHARP SEMI-AUTOMATIC ROTARY BOTTLE WASHING MACHINE



HYGENIC CLEANING



DEMONSTRATION AVAILABLE



SRWM-64/96